



## COLD SNAP WARNING

From 08:00 on November 30th to 08:00 December 1<sup>st</sup>, below regions will experience winds of force 7-8, with gusts of force 9.

- the eastern and southern parts of the **East China Sea**,
- **Taiwan Strait**, the waters east of Taiwan,
- **Bashi Channel**, the central, northern, and southwestern parts of the **South China Sea**
- northern part of the **Gulf of BGG**

From **December 3<sup>rd</sup> to 5<sup>th</sup>** there will be another cold air mass affecting,

- North China
- **Huang-Huai region**,
- the Nortesr region
- temperatures drop of 4-6 degrees and up to 8 degrees drop in some areas.

**Bayuquan/Panjin:** The pilot service was suspended from 0853lt/29th to 0740lt/30th. Nov due to strong wind.

**Caofeidian:** The channel was closed from 0415lt/29th to 1240lt/29th. Nov due to strong wind

**Jingtang:** The channel was closed from 0820lt/29th to 1050lt/29th Nov due to strong wind

**Huanghua:** The port was closed from 0400lt/29th to 1100lt/29th. Nov due to strong wind

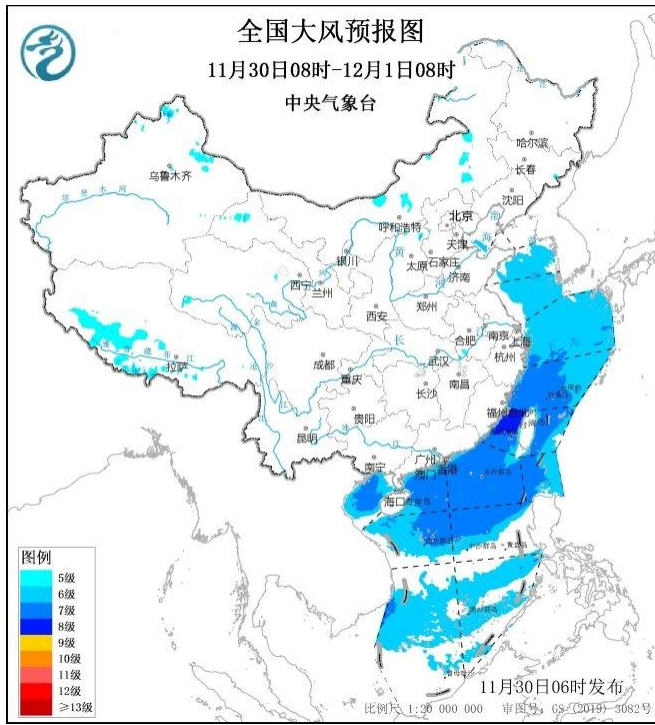
**Lianyungang:** The channel was under control from 1035lt/29th to 0550lt/30th. Nov due to strong wind

**Rizhao/Lanshan:** The port was closed from 0930lt/29th to 0100lt/30th Nov due to strong wind

**Dafeng:** All vessels were shifted to anchorage to take shelter of strong wind from afternoon of 30th, expected to resume operations on 1st/Dec.

**CJK:** North channel was under control from 1900lt/29th due to strong wind, South channel as normal but subject to vessel's draft.

**Zhoushan:** Berthing/unberthing are as normal.



Wind forecast (30th-1st-2nd)

