

Bad Weather Warning

In early November, the coal wave is sweeping north China ports from 01st to 06th Nov. Foggy weather affected some north China ports on 01st-02nd Nov as well.

During 05th-06th Nov, it is expected of the strong wind in middle China ports.

The following China ports are being affected by the bad weather:

Dandong: port channel closed from 2200lt 01st Nov to 0910lt 02nd Nov due to dense fog.

Tianjin: port channel closed from 1900lt 31st Oct to 1900lt 01st Nov due to dense fog.

Jingtang: port channel closed from 2320lt 31st Oct to 0820lt 01st Nov due to dense fog.

Dalian: port channel closed from 0700lt 01st Nov to 2210lt 01st Nov due to dense fog.

CJK: navigation control in the channel, inbound vessels are not allowed to enter CJK from 0400lt 04th Nov to 1030lt 04th Nov due to dense fog.

Dandong: port channel closed from 2105lt 05th Nov until now due to strong wind.

Dalian: port channel closed from 0620lt 06th Nov until now due to strong wind.

Bayuquan: port channel closed from 1330lt 02nd Nov to 1100lt 03rd Nov due to strong wind.

Jinzhou: port channel closed from 0000lt 06th Nov until now due to strong wind.

Qinhuangdao: port channel closed from 0020lt 03rd Nov to 1210lt 03rd Nov due to strong wind.

Port channel closed from 1230lt 05th Nov until now due to strong wind.

Jingtang: port channel closed from 1200lt 05th Nov until now due to strong wind.

Tianjin: port channel closed from 2330lt 05th Nov until now due to strong wind.

Huanghua: port channel closed from 0100lt 03rd Nov to 1200lt 03rd Nov due to strong wind.

Pilot channel closed from 1530lt 05th Nov until now due to rough sea condition.

Longkou: pilot service suspended from 0700lt 03rd Nov to 1500lt 03rd Nov due to strong wind.

Yantai: port channel closed from 0700lt 06th Nov until now due to strong wind.

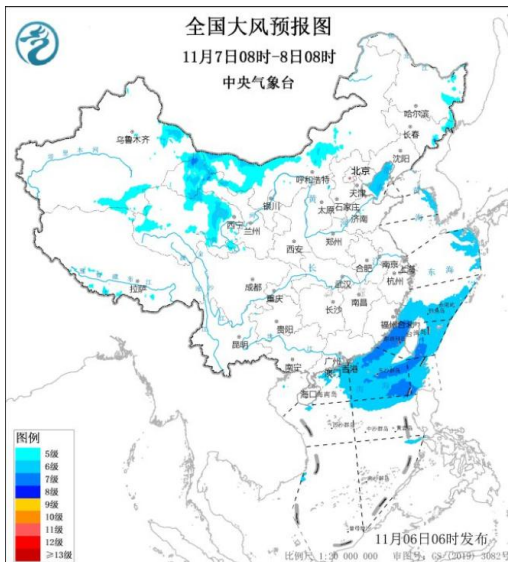
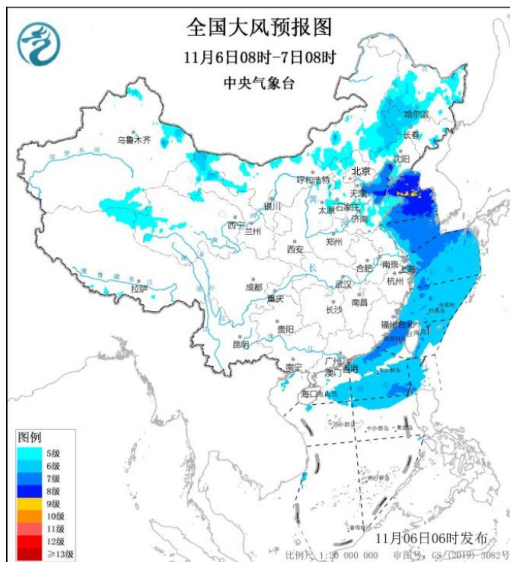
Dongjiakou: port channel closed from 1958lt 05th Nov until now due to strong wind.

Qingdao(Qianwan): port channel closed from 0100lt 06th Nov until now due to strong wind.

Rizhao: port channel closed from 2300lt 05th Nov until now due to strong wind.

Lanshan: port channel closed from 2300lt 05th Nov until now due to strong wind.

Lianyungang: port channel closed from 0600lt 06th Nov until now due to strong wind.





YOUR VESSELS, OUR PORTS

BOOK A PORT



www.masoceans.com



+41 (0) 22 552 0051



martaxelle@masoceans.com